



MeterBoxesDirect.co.uk



GRP OVERBOX ELECTRIC RECESSED MARK 2

GRP architrave overbox to suit damaged recessed meter boxes. This GRP Overbox (Door frame kit) comes with a tapered back to fit standard UK electricity meter boxes.

COMPLIANT TO BS 8567 : 2012

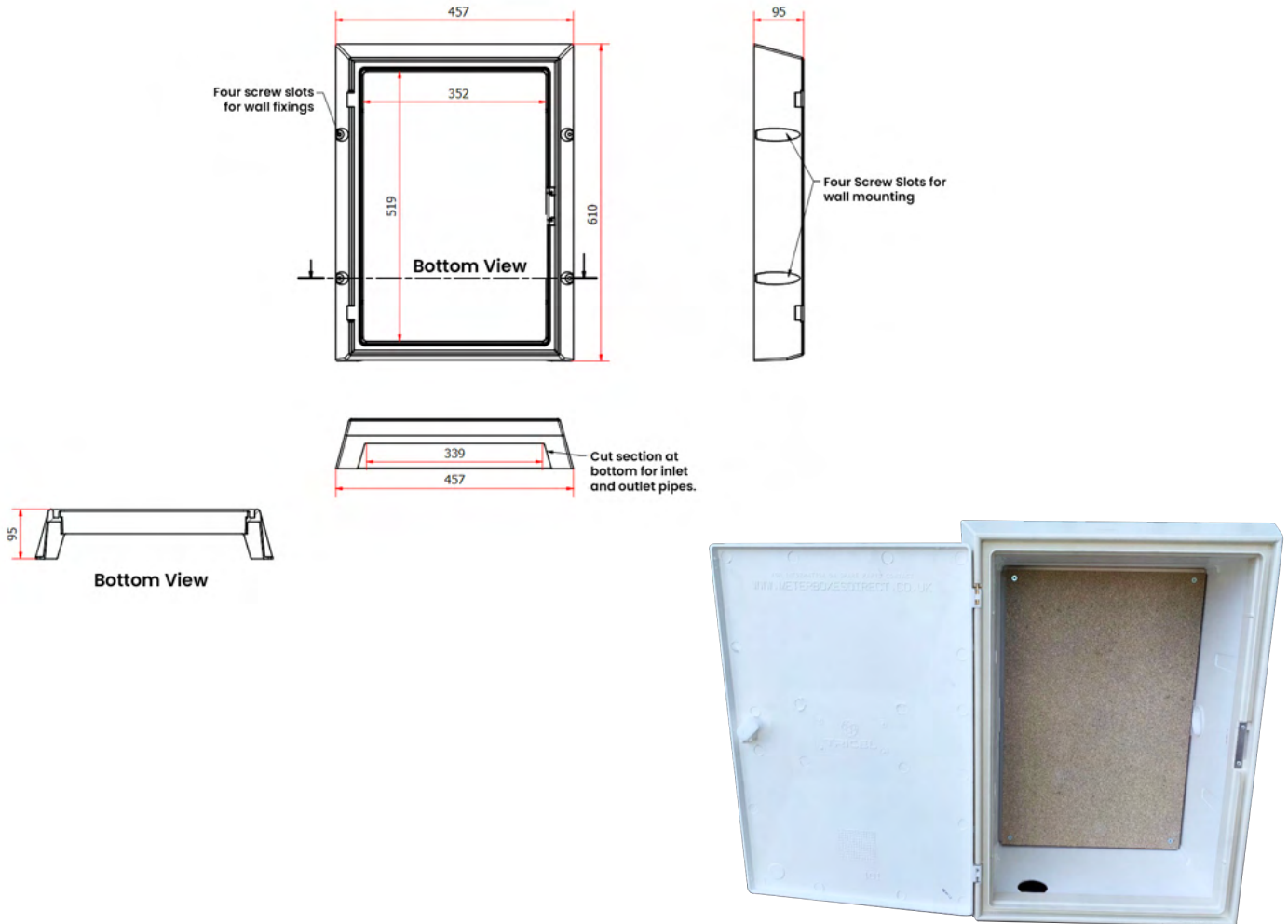
STOCK CODE: **105140**



TRICEL
CONSTRUCTION

Stock Code:
105140

GRP OVERBOX ELECTRIC
GRP architrave overbox to suit
damaged recessed meter boxes.



DIMENSIONS

610mm high x 457mm wide x 95mm deep.

Internal dimensions = 519mm high x 352mm wide*

SPECIFICATION & KEY FEATURES

- GRP overbox, repair solution for damaged Electric recessed meter boxes.
- Meets the requirements of British Standard BS8567 : 2012.
- Works with Smart Meters (no interference).
- Constructed from SMC / GRP – Glass Reinforced Polymer.
- Will not corrode, weather resistant.
- Easily cleaned and can be painted.
- Hinges on right.
- Suitable for buildings with red bricks.

*Approximate dimensions. In accordance with Tricel's normal policy of product development these specifications are subject to change without notice.

Tricel (Gloucester) Ltd. – Fox House, Stonedale Road, Stonehouse, Gloucestershire, GL10 3SA,
United Kingdom. **Tel:** +44 1453 791616 **Email:** constructionsales@tricel.co.uk **Web:** tricel.co.uk

Stock Code:

105140

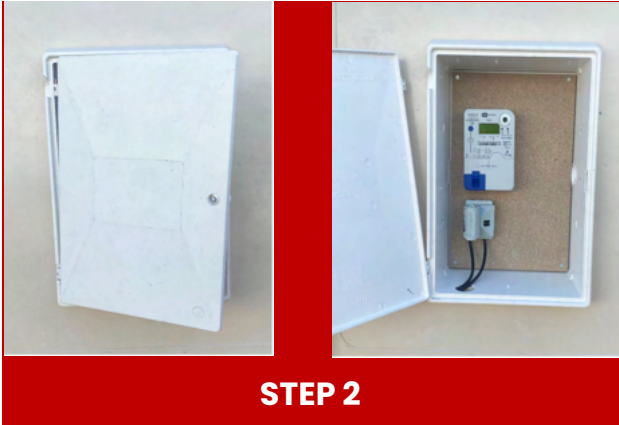
GRP OVERBOX ELECTRIC

GRP architrave overbox to suit damaged recessed meter boxes.

Step 1: Ensure that the GRP Overbox that you want to fit is the correct one for the box on the wall.

The existing box on the wall should be approximately:

- Height = 595mm to 600mm
- Width = 410mm to 412mm
- Depth (outside of box to wall) = 70mm to 75mm



Step 2: Remove the existing door, clean the box architrave and inspect for damage. Any damage (holes or cracks) should be filled using a 4-hour fire-retardant silicone to ensure that water doesn't enter the cabinet.

Step 3: After unpacking the new GRP Overbox, remove the door from the damaged meter box. This can be done by depressing the brass insert hinge with a narrow screwdriver.



Step 4: On the wall, position the GRP Overbox over the damaged box. Make sure the box fits properly (incorrect wall installation may hinder this).



Step 5: Mark the holes on the wall from the Overbox fitting holes:



Step 6: Drill holes using M6 Drill bit at a depth of 30mm

*Approximate dimensions. In accordance with Tricel's normal policy of product development these specifications are subject to change without notice.

Tricel (Gloucester) Ltd. - Fox House, Stonedale Road, Stonehouse, Gloucestershire, GL10 3SA, United Kingdom. **Tel:** +44 1453 791616 **Email:** constructionsales@tricel.co.uk **Web:** tricel.co.uk

Stock Code:
105140

GRP OVERBOX ELECTRIC
GRP architrave overbox to suit
damaged recessed meter boxes.



STEP 7

Step 7: Drill holes using M6
Drill bit at a depth of 30mm



STEP 8

Step 8: Align the Overbox to the holes drilled on wall
and fix to the wall using supplied M5x30mm screws.



STEP 9

Step 9: Close the door
and test the fit.



STEP 10

Step 10: You may need to seal the architrave to
the wall to fill in gaps, we only recommend
FR200 four-hour fire-retardant silicone.

ASSOCIATED PRODUCTS

Spare key
(170001)



**4-Hour Fire Retardant
Silicone (106164)**



*Approximate dimensions. In accordance with Tricel's normal policy of product development these specifications are subject to change without notice.

Tricel (Gloucester) Ltd. - Fox House, Stonedale Road, Stonehouse, Gloucestershire, GL10 3SA,
United Kingdom. **Tel:** +44 1453 791616 **Email:** constructionsales@tricel.co.uk **Web:** tricel.co.uk